



DIRECT • MOVES
ESTATE AGENTS

161 COBHAM DRIVE, WEYMOUTH, DORSET DT4 0SX

£210,000



PROPERTY REFERENCE CODE: 19778

161 COBHAM DRIVE, WEYMOUTH, DORSET DT4 0SX

Three Bedroom Home Well Presented Large Rear Garden Popular Location Ideal First Time Buy/Family Home No Forward Chain

This property consists of:

Direct Moves Estate Agents are delighted to offer a WELL PRESENTED THREE bedroom family home in Cobham Drive which is just located off the Radipole Lane in Weymouth. Offered with NO FORWARD CHAIN the property in brief consists of living room which opens into a dining area, kitchen, a large inner hall, utility, downstairs cloakroom, three bedrooms and family bathroom. Externally offers a LARGE REAR garden mainly laid to lawn. The property sits within easy reach of local amenities and would make a great FIRST TIME BUY/FAMILY HOME.

Entrance

Via double glazed door to:-

Hallway

Wall mounted radiator, under stairs storage cupboard, stairs to first floor, central ceiling light, door to:-

Lounge

Front aspect double glazed window, wall mounted radiator, power points, TV point central ceiling light, opening to;_ 14'10 x 9'11

Dining room

Rear aspect double glazed window, wall mounted radiator, power points, central ceiling light, door to:- 9'0 x 7'10

Kitchen

Rear aspect double glazed window, range of eye and base level units with work surfaces over,. 1 ½ bowl sink unit with drainer, integrated electric oven with inset 4 ring hob and hood over, space and plumbing for dish washer, space fr fridge/.freezer, tiled splash backs, power points, ceiling light 8'0 x 8'0

Inner Lobby

Front aspect wooden door leading to front gardens, power points, central ceiling light, door to:-

Utility

Side aspect wooden door to garden, space and plumbing for washing machine door to

Cloakroom

Rear aspect wooden single glazed window, low level WC, central ceiling light

Rear Garden

Large enclosed rear garden, mainly laid to lawn, patio area, planted shrubs and borders

First Floor Landing

Double glazed window, access to loft via hatch, wall mounted radiator, built in cupboard housing, central ceiling light, door to:-

Bedroom 1

Front aspect double glazed window, wall mounted radiator, built in cupboard, power points, central ceiling light 12'11 x 8'1

Bedroom 2

Rear aspect double glazed window, wall mounted radiator, power pints, central ceiling light 8'0 x 11'0

Bedroom 3

Front aspect double glazed window, wall mounted radiator, built in cupboard, power pints, central ceiling light 12'0 x 6'10

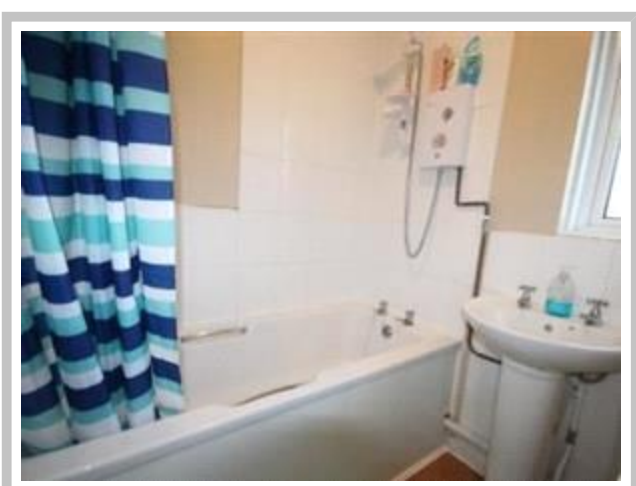
WC

Rear aspect double glazed window, low level WC, central ceiling light 2'1 x 5'0

Bathroom

Rear aspect double glazed window, wall mounted radiator, panel enclosed bath with wall mounted power shower over, pedestal wash hand basin, part tiled walls, central ceiling light 4'1 x 5'1





TENURE: We have been advised by the Vendors the property is Freehold.
It is advised to have this information verified by your legal representative; we take no legal responsibility given by a vendor/seller of its accuracy. It was not possible to verify and obtain this information given by means of any current documentation.